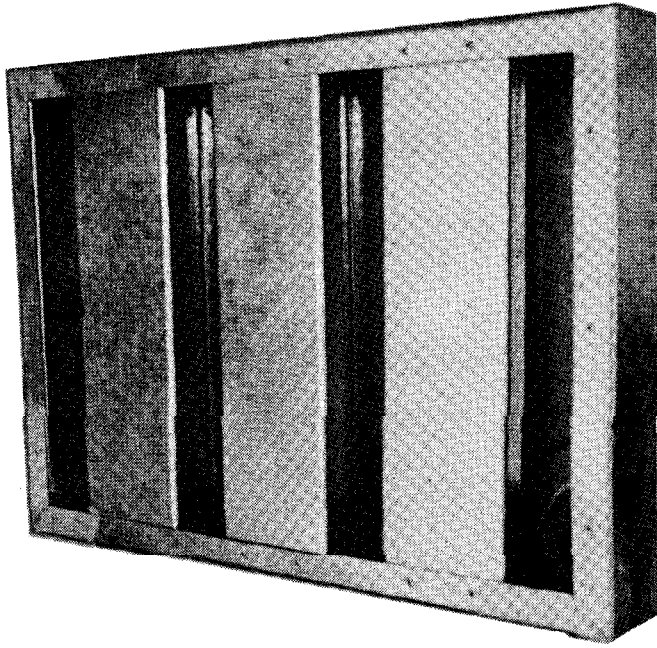




SAUDI AIR CONTROL. SYSTEM
INDUSTRIAL REGISTRATION NO.353



SAND TRAP LOUVER



SAND TRAP LOUVER

OUT STANDING FEATURES:

- Designed for intake applications to separate sand from intake air.
- A typical efficiency:
 - 80 percent on 20 to 200 microns test dust distribution.
 - 50 percent on 1 to 70 microns test dust distribution.
- Provided with self emptying sand drain holes from the base.
- Choice of either galvanized steel or aluminum construction.
- Optional wire screen:
 - Galvanized wire bird screen - $\frac{1}{2} \times \frac{1}{2}$ in., 0.047 diameter wire.
 - Aluminum wire bird screen - $\frac{1}{2} \times \frac{1}{2}$ in., 0.063 diameter wire.

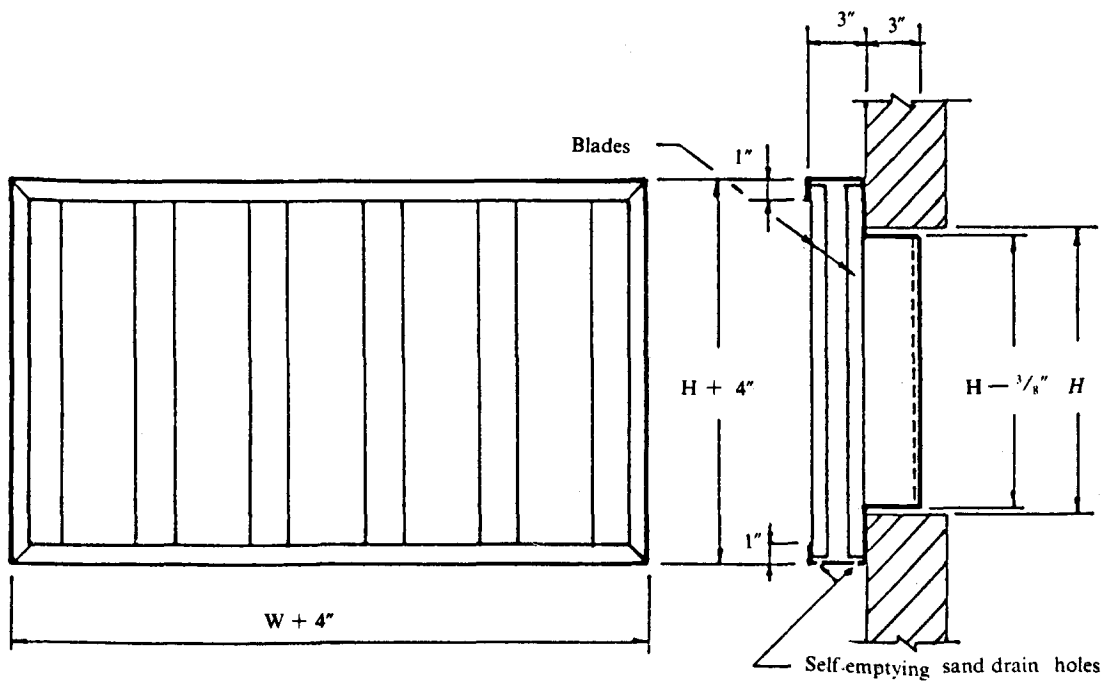
DIMENSIONAL DATA

MODEL GSTL

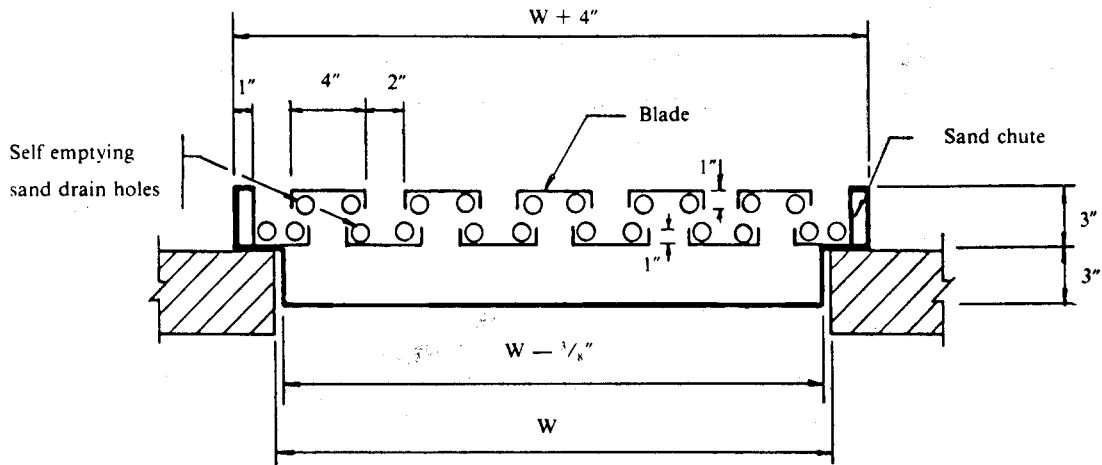
- Standard galvanized steel construction.
- Frames : 18 gage.
- Blades : 20 gage.

MODEL GASTL

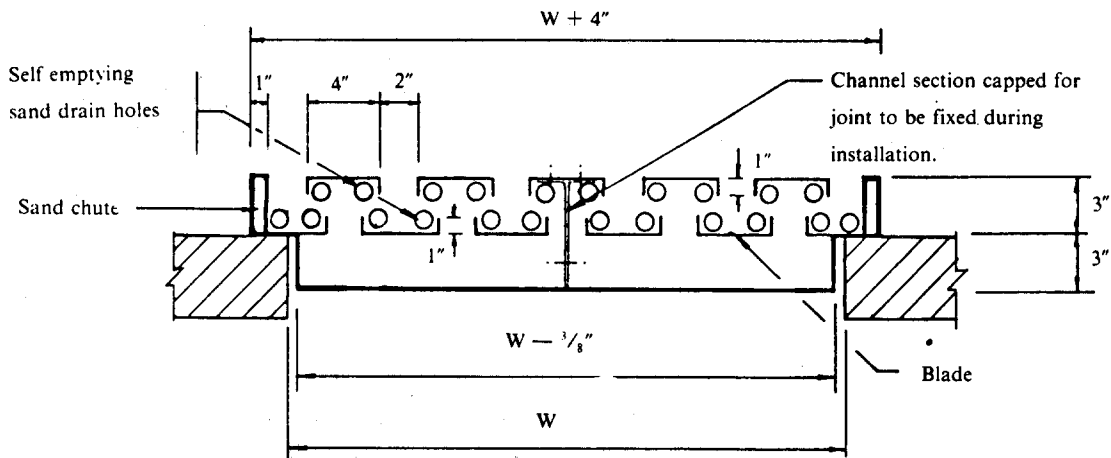
- Standard aluminum construction.
- Frames : $\frac{5}{64}$ " thick
- Blades : $\frac{1}{6}$ " thick



DIMENSIONAL DATA



PARALLEL SECTION
(W = 12" minimum up to 90" maximum)



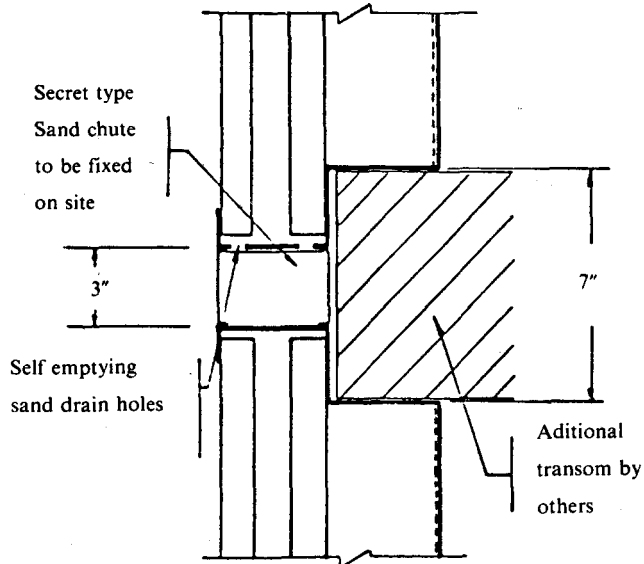
PARALLEL SECTION
(W = 90" minimum up to 180" maximum)

SINGLE SECTION SIZES	
W (inches)	H (inches)
12	12
18	18
24	24
30	30
36	36
42	42 *
48	48 *
54	54 *
60	60 *
66	66 *
72	72 *
78	78 *
84	84 *
90	90 *

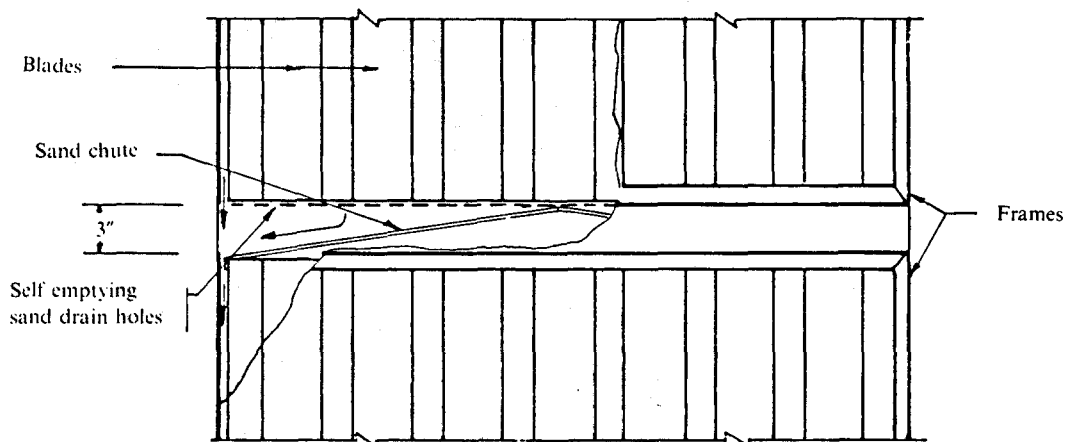
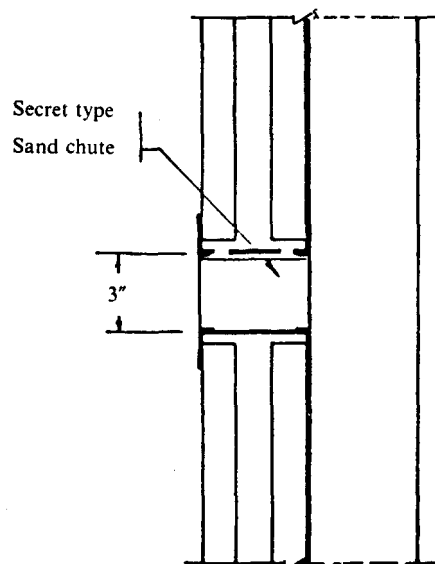
Note: Sizes shown are available in all W X H size combinations.
 * — 'H' - sizes with central transom and sand chute.

APPLICATION DETAILS
(with central transom and sand chute)

SPLIT DETAIL
(H = 90" to 180")



TRANSOM DETAIL
(H = 42" to 90")



HOW TO SPECIFY AND ORDER:

1. Quantity required
2. Model
3. With or without wire screen
4. Size combination


GOLDEN STAR
 SAUDI AIR CONTROL SYSTEM

PERFORMANCE DATA

—For inlet application with duct or plenum connection

Face velocity based on W X H, Fpm, 100 200 300 400 500 Total pressure, in. of
 H₂O .024 .80 .189 .333 .522

EFFECTIVE PRESSURE AREAS, FT

Width - 'W' inches	12	18	24	30	36	42	48	54	60	66	72	78	84	90
Height - 'H', inches														
12	.31	.47	.64	.79	.96	1.12	1.28	1.44	1.60	1.77	1.93	2.09	2.25	2.41
18	.47	.72	.96	1.21	1.45	1.7	1.94	2.19	2.43	2.68	2.92	3.17	3.41	3.66
24	.64	.96	1.29	1.62	1.95	2.78	2.60	2.93	3.26	3.59	3.92	4.24	4.57	4.90
30	.79	1.21	1.62	2.03	2.44	2.85	3.27	3.68	4.09	4.50	4.91	5.32	5.73	6.15
36	.96	1.45	1.95	2.44	2.94	3.43	3.93	4.42	4.92	5.41	5.91	6.40	6.89	7.39
42	1.04	1.57	2.11	2.65	3.19	3.72	4.26	4.79	5.33	5.87	6.40	6.94	7.47	8.01
48	1.20	1.82	2.44	3.06	3.68	4.30	4.92	5.54	6.16	6.78	7.40	8.02	8.64	9.26
54	1.36	2.06	2.77	3.47	4.17	4.87	5.58	6.28	6.98	7.69	8.39	9.10	9.80	10.50
60	1.52	2.31	3.09	3.88	4.67	5.45	6.24	7.03	7.81	8.60	9.39	10.17	10.96	11.75
66	1.69	2.55	3.42	4.29	5.16	6.03	6.90	7.77	8.64	9.51	10.38	11.25	12.12	13.0
72	1.85	2.80	3.75	4.71	5.66	6.61	7.57	8.52	9.47	10.42	11.38	12.33	13.28	14.23
78	2.01	3.04	4.08	5.12	6.15	7.19	8.23	9.26	10.30	11.33	12.37	13.41	14.44	15.48
84	2.17	3.29	4.41	5.53	6.65	7.77	8.89	10.01	11.13	12.25	13.37	14.49	15.61	16.72
90	2.33	3.53	4.74	5.99	7.14	8.35	9.55	10.75	11.96	13.16	14.36	15.56	16.77	17.97